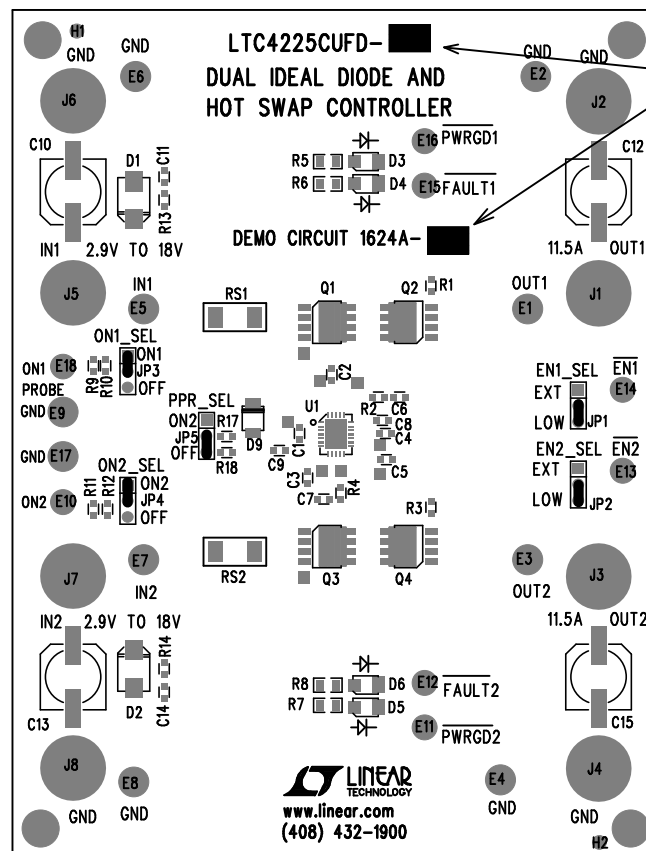


| REVISION HISTORY | | | | |
|------------------|-----|-------------|-------------|----------|
| ECO | REV | DESCRIPTION | APPR | DATE |
| - | 3 | PRODUCTION | VLADIMIR O. | 11-09-10 |



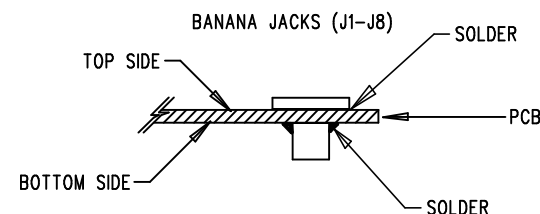
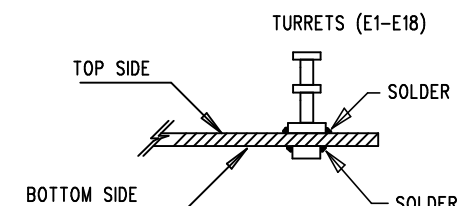
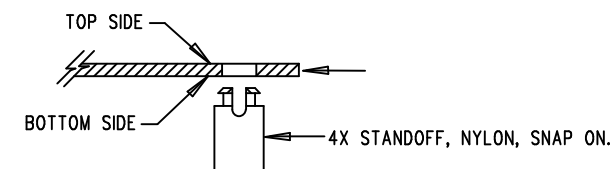
TOP SILKSCREEN

LINEAR TECHNOLOGY
DC1624A-3-LTC4225CUFD-1/-2
DUAL IDEAL DIODE AND
HOT SWAP CONTROLLER
DATE: 11-09-10

8.


NOTES: UNLESS OTHERWISE SPECIFIED

1. WORKMANSHIP SHALL BE IN ACCORDANCE WITH IPC-A-610. MAXIMUM SOLDER TEMPERATURE IS 240 DEG C.
2. ASSEMBLY PROCESS SHALL INCLUDE: REFLOW SOLDER TOP SIDE SMD.
3. PARTS TO OMIT WILL BE SPECIFIED ON THE BILL OF MATERIALS. LOCATIONS OF OMITTED PARTS SHALL BE FREE OF SOLDER. MASK THE SOLDER STENCIL WHERE SMT PARTS ARE OMITTED.
4. INSTALL SHUNTS AS SHOWN ON ASSY DRAWING.
5. DEPANELIZE BOARDS AFTER ASSEMBLY AND ROUTE-OUT THE BREAKOUT TABS ON FOUR SIDES OF THE BOARD EDGE.
6. DO NOT APPLY ANY KIND OF ASSEMBLY STAMP OR QA STAMP TO ANY BOARD.
7. INSTALL 4 STANDOFFS AT 4 LOCATIONS, INSTALL TURRETS AND BANANA JACK.



8. MARK EACH LTC PART NUMBER AND ASSEMBLY TYPE WITH BLACK PERMANENT MARKER AS SHOWN IN TABLE BELOW:

| ASSY | U1 |
|------|---------------|
| -A | LTC4225CUFD-1 |
| -B | LTC4225CUFD-2 |

| APPROVALS | |  1630 MCCARTHY BLVD MILPITAS, CA 95035 PH: (408)432-1900 www.linear.com LTC CONFIDENTIAL- FOR CUSTOMER USE ONLY | | |
|--------------|-------------|--|--|------------|
| PCB DES. | A.K. | | | |
| APP ENG. | VLADIMIR O. | TITLE: TOP ASSEMBLY DRAWING DUAL IDEAL DIODE AND HOT SWAP CONTROLLER | | |
| | | SIZE | IC NO. | REV. |
| | | N/A | LTC4225CUFD-1/-2 DEMO CIRCUIT 1624A | 3 |
| SCALE = NONE | | FILENAME: DC1624A-3.PCB | | SHT 1 OF 2 |